



***Fire Safe Sierra County
CalFire Fire Prevention Grant
RPF Request for Proposals***

Project Overview:

Firesafe Sierra County (FSSC), consistent with the Sierra County Community Wildfire Protection Plan (CWPP), Sierra County Local Hazard Mitigation Plan (LHMP), and California's Wildfire and Forest Resilience Action Plan, proposes to reduce the risk of catastrophic wildfire and improve forest health and resilience through implementation of shaded fuel breaks within and adjacent to the communities of Sierra City and Sattley within Sierra County. Project objectives include 1) Creation of fuel breaks upon 400 acres within and adjacent to Sierra City and Sattley, adjacent to the arterial evacuation route for the communities, 2) reduce wildfire's risk to human health and safety, 3) reduce the risk of adverse wildfire effects and potential fire behavior (flame length, intensity, rate of spread, duration) through reduction of fuel loading and arrangement within the Wildland Urban Interface (WUI) Defense and Threat Zones, and 4) improve public safety during a wildfire event by removal and modification of fuels within the State Route 49 corridor, the critical ingress/egress route and sole evacuation route for the community's residents. Expected outcomes of the "Sierra City – Sattley Fuels Reduction Project" include creation of 400 acres of fuel break amongst two communities as identified in the Sierra County CWPP utilizing a combination of fuel treatment methods including thinning from below, selective tree removal, mastication, and hand thinning techniques.

Firesafe Sierra County's goal is to treat 150 acres in Sierra City and 250 acres in Sattley. The RPF will be responsible to conduct site visits on all potential sites, prioritize treatment areas, develop site-specific prescriptions, submit necessary CEQA documentation, as well as oversee implementation and conduct before and after photo monitoring.

Project funding is provided by a CalFire Wildfire Prevention grant. As such CEQA is required for all project activities. With your bid please indicate if surveys will be conducted by the RPF or subcontracted by the RPF.

Contract Terms:

This agreement shall be effective upon execution by all parties, and shall continue through March 15, 2028 or until work is complete, whichever comes first.

Payment will only be made for actual work accomplished and invoiced. RPF must acknowledge and affirmatively indicate that they can provide such services and complete all the tasks within the agreed to amounts on a time and materials basis.



Scope of Work:

Completion of the tasks will require working with the property owners, Contractors, and Firesafe Sierra County. RPF will be responsible to:

- 1) collect pre-assessment information including photo points, treatment options, costs, and acreages,
- 2) provide project layout for and prepare prospectus for soliciting treatment contractors,
- 3) conduct resource surveys,
- 4) determine the appropriate CEQA documentation and submit to the lead agency,
- 5) assist Firesafe Sierra County in the execution of "Landowner Agreements,"
- 6) make recommendations to FSSC on potential contractors,
- 7) provide contractor oversight,
- 8) collect post-treatment photo points, and
- 9) provide updated GIS files detailing all treatment activities.

Project Tasks:

- RPF will coordinate the development of the fuel reduction project with the property owners, Firesafe Sierra County, Contractor's, and other relevant agencies through the development of an Operational Plan and Schedule that demonstrates the completion of all the tasks by agreed to date. RPF will conduct an appropriate field review of potential project locations on the site in order to accomplish the following tasks:
 - Development of fuel reduction prescriptions, delineation of trees or vegetation to be removed, and layout in conjunction with landowners or representatives.
 - Preparation of environmental compliance (CEQA) documents
 - Preparation of treatment prospectus for solicitation of contractors
- RPF will work with landowners to define/ flag property and treatment boundaries.
- RPF will provide pre-treatment digital photographs and basic fire behavior information associated with the project, using identifiable photo points, to Firesafe Sierra County
- RPF will develop site specific treatment prescriptions and prioritize areas for treatment according to the available implementation budget.
- RPF will conduct resource surveys and flag sensitive areas for avoidance.
- RPF will determine appropriate environmental compliance and develop and submit relevant documentation.
- RPF will provide a spreadsheet to Firesafe Sierra County specifying landowner, treatment type, and unit size.
- RPF may assist Firesafe Sierra County in the execution of the individual "Landowner Agreements" for signature by the landowners. These documents will include technical specifications, cost calculations, supporting maps and contract documents and may require discussion with the landowner on planned treatments.
- Prepare and provide a "Project Prospectus" to solicit qualified contractors for treatment. Evaluate bids and make recommendations on selection of treatment contractors considering best value (cost, experience, history, licenses). Help ensure treatments can be



accomplished within cost constraints.

- RPF will oversee contractor operations to ensure treatments are conducted according to project specifications. RPF will conduct final assessment of the operator's work before authorizing payment of invoices.
- RPF will develop project level Geographic Information System (GIS) maps using Global Positioning System (GPS) technology in an agreed upon format.
- RPF may provide continual administration and monitoring of the hazardous fuel reduction project (as appropriate) and develop notices of completion on the project and assist in tracking invoices and costs, reporting all information to FSSC.
- RPF will provide post-treatment digital photographs and basic fire behavior information associated with the project, using identifiable photo points to FSSC.

Insurance Requirements:

RPF shall maintain insurance coverage, naming Firesafe Sierra County and any related agency for whom the services under the contract are being provided, the contract shall require proof of:

- 1) Commercial General Liability: One Million Dollars (\$1,000,000) combined single limit per occurrence for bodily injury, personal injury and property damage. If Commercial General Liability Insurance or other form with general aggregate limit is used, either the general aggregate limit shall apply separately to this Agreement or the general aggregate limit shall be twice the required occurrence limit.
- 2) Professional Errors and Omissions Liability: Policy limits of not less than One Million Dollars (\$1,000,000) per occurrence and One Million Dollars (\$1,000,000) annual aggregate, with deductible or self-insured portion not to exceed Twenty-Five Thousand Dollars (\$25,000).
- 3) Automobile Liability: \$1,000,000 combined single limit per occurrence for bodily injury or property damage.
- 4) Workers' Compensation and Employers Liability: (If employing workers) Workers' Compensation limits as required by the Labor Code of the State of California and Employers Liability limits of One Million Dollars (\$1,000,000) per occurrence.

The contract shall require the contractor to maintain such insurance and to indemnify Firesafe Sierra County against claims arising from the contractor's performance of the contract.

Bidding Procedure:

In an effort to increase capacity and efficiency Firesafe Sierra County reserves the right to award two different contracts for this project: one for Sierra City project area and the other for the Sattley project area. Please provide separate line items for each project area within the proposal.

Please email bids no later than 5pm PST, March 22, 2024.



Bid Scoring

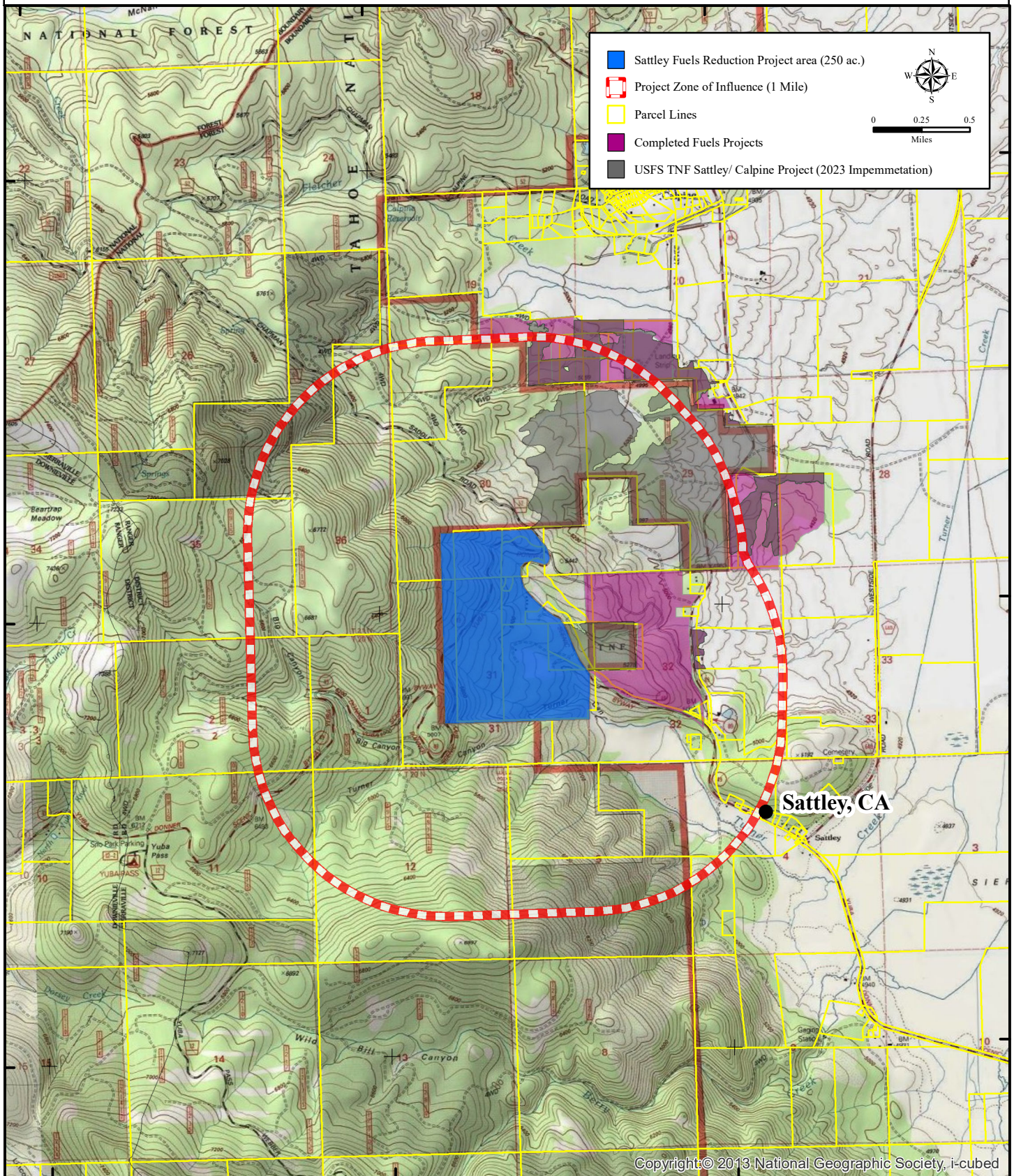
- 1) Overall Cost 10%
- 2) Qualifications 15%
- 3) Experience with similar landscape scale private property fuels reduction projects within the last 3 years 30%
- 4) Project approach 30%
- 5) Capacity to complete the required tasks within the stated time frame 10%
- 6) GIS Knowledge and Capacity 5%

Send bids to:

Rodd Rummel c/o Firesafe Sierra County
PO Box 124 Downieville, CA 95936
rrummel@firesafesierracounty.org
(530)994-2266

Sierra City - Sattley Fuels Reduction Project

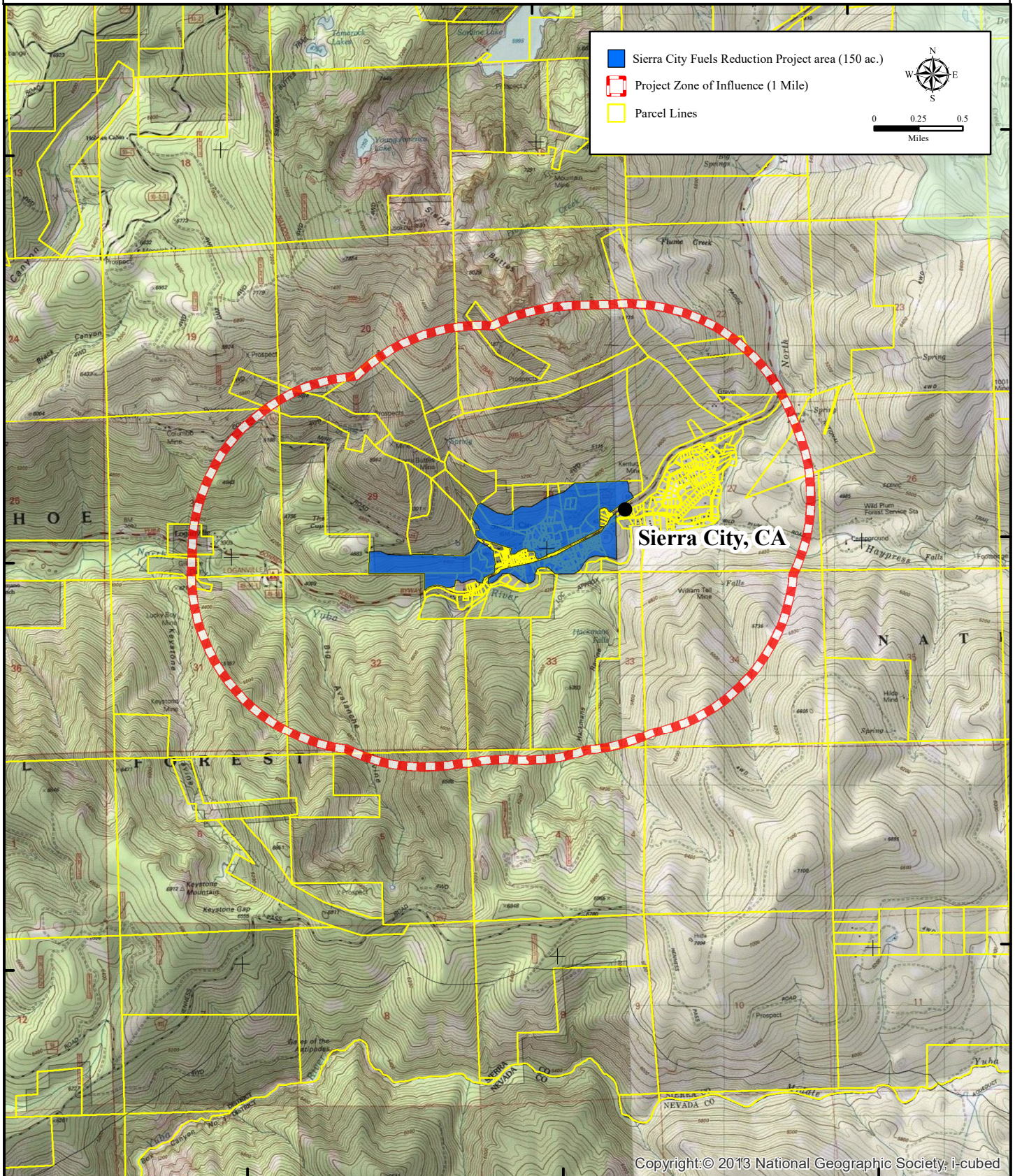
Sattley Project Area Map



Copyright © 2013 National Geographic Society, i-cubed

Sierra City - Sattley Fuels Reduction Project

Sierra City Project Area Map



120°40'0"W

120°38'0"W

120°36'0"W